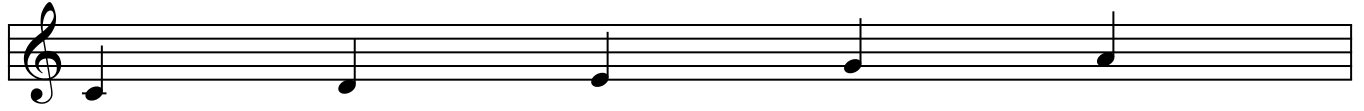
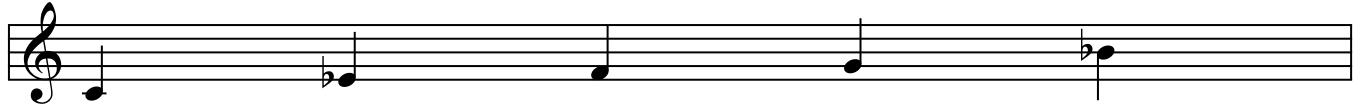


# Pentatonic Scales

C major pentatonic =  $\Delta$  pentatonic



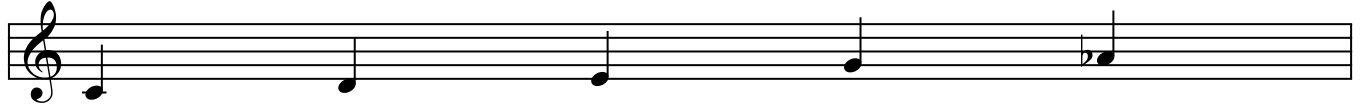
C minor pentatonic = m7 pentatonic



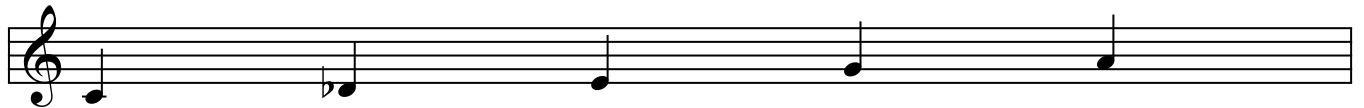
C minor 6 pentatonic = m6 pentatonic



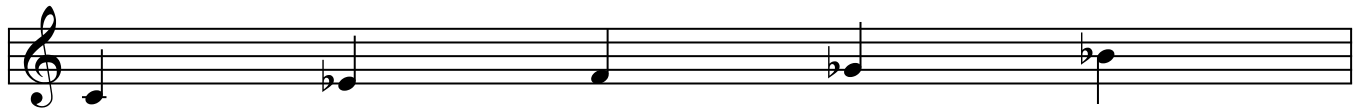
C major b6 pentatonic =  $\Delta b6$  pentatonic



C major b2 pentatonic =  $\Delta b2$  pentatonic



C minor 7 b5 pentatonic = m7b5 pentatonic



C whole tone pentatonic = w. t. pentatonic

